

ZONE STATS...

- Population** 478,979
- Life Expectancy** 79.7 years
- Hospitals** 34
- Physicians** 579
- AHS Employees** 10,411
- Volunteers** 3,083
- Size** 448,500 km²
- Patients attached to a PCN** 318,549 - 71% of all North Zone residents!
- Meals served in AHS facilities this year** Over 1.7 M

DID YOU KNOW...

- Almost 300 new continuing care spaces are planned to open in communities across northern Alberta by 2016.
- There are a total of 42 EMS stations with over 600 EMS practitioners in the North Zone.
- There are three new hospitals under construction in the North Zone. The Grande Prairie Regional Hospital will offer radiation therapy treatment for the first time in northern Alberta. The Edson Healthcare Centre consolidates health services in one place improving access while the new High Prairie Health Complex adds 30 continuing care spaces in the community.
- In addition to inpatient psychiatry units in Grande Prairie, Fort McMurray and St. Paul there are 48 Addiction and Mental Health community clinics and two addiction treatment centres in the North Zone.
- A \$13-million renovation to Fort McMurray's Northern Lights Regional Health Centre's emergency department, ambulance bay and intensive care unit was completed in 2014.



ALPHABETICAL LISTING OF SERVICES BY COMMUNITY • NORTH ZONE

For more information about health care options, programs and services, contact your local facility at the numbers provided below. Many programs and services, such as Addiction & Mental Health and Public Health, are available through your local health centre.

ANZAC

Anzac Public Health Clinic 780-334-2424

ATHABASCA

Athabasca Addictions Services 780-675-5841
Athabasca Community Health Services 780-675-2231
Athabasca Health Care Centre 780-675-6000
Athabasca Mental Health Services 780-675-5404

BARRHEAD

Barrhead Addictions Services 780-674-8239
Barrhead Community Cancer Centre 780-305-3304
Barrhead Community Health Services 780-674-3408
Barrhead Health Care Centre 780-674-2221
Barrhead Home Care 780-674-4139
Barrhead Mental Health Services 780-674-8243
Dr. W.R. Keir Building
Continuing Care Centre 780-674-4506

BEAVERLODGE

Beaverlodge Mental Health Services 780-538-5160
Beaverlodge Municipal Hospital 780-354-2136
Beaverlodge Public Health Centre 780-354-2647

BONNYVILLE

Bonnyville Addictions Services 780-826-8054
Bonnyville Community Cancer Centre 780-826-3311
Bonnyville Community Health Services 780-826-3381
Bonnyville Health Care Centre (Covenant Health) 780-826-3311
Bonnyville Mental Health Services 780-826-2404

BOYLE

Boyle Community Health Services 780-689-2677
Boyle Health Care Centre 780-689-3731

BUFFALO LAKE

Buffalo Lake Community Health Services 780-689-4771

CADOTTE LAKE

Woodland Cree Health Centre 780-629-8963

CALLING LAKE

Calling Lake Community Health Services 780-331-3760

COLD LAKE

Cold Lake Addictions Services 780-594-7556
Cold Lake Community Health Services 780-594-4404
Cold Lake Health Care Centre 780-639-3322
Cold Lake Mental Health Services 780-639-4922

CONKLIN

Conklin Public Health Clinic 780-559-2011

EAST PRAIRIE MÉTIS SETTLEMENT

East Prairie Community Health Services 780-523-2594

EDSON

Edson Addictions Services 780-723-8232
Edson Community Health Services 780-723-4421
Edson Health Care Centre 780-723-3331
Edson Mental Health Services 780-723-8294

ELK POINT

Elk Point Community Health Services 780-724-3532
Elk Point Health Care Centre 780-724-3847

ELIZABETH MÉTIS SETTLEMENT

Elizabeth Community Health Services 780-594-3383

FAIRVIEW

Fairview Community Health Services 780-835-4951
Fairview Health Complex 780-835-6100
Fairview Mental Health Services 780-835-6149

FISHING LAKE

Fishing Lake Métis Settlement 780-943-3058

FORT CHIPEWYAN

Fort Chipewyan Nursing Station (Nunee Health) 780-697-3650

FORT MACKAY

Fort MacKay Health Centre 780-828-4229

FORT MCMURRAY

Fort McMurray Addictions Services 780-743-7187
Fort McMurray Community Cancer Centre 780-791-6161
Fort McMurray Community Health Services 780-791-6247
Fort McMurray Mental Health Services 780-791-6194
Northern Lights Regional Health Centre 780-791-6161

FORT VERMILION

Fort Vermilion Community Health Centre 780-927-3391
St. Theresa General Hospital 780-927-3761

FOX CREEK

Fox Creek Health Care Centre 780-622-3545
Fox Creek Public Health Centre 780-622-3730

GIFT LAKE

Gift Lake Community Health Services 780-767-2101

GLENDON

Glendon Community Health Clinic 780-635-3861
(services delivered through Bonnyville CHS)

GRANDE CACHE

Grande Cache Addictions Services 780-827-3430
Grande Cache Community Health Complex 780-827-3701
Grande Cache Mental Health Services 780-827-4998
Grande Cache Public Health Centre 780-827-3504

GRANDE PRAIRIE

Grande Prairie Addictions Services 780-538-6330
Grande Prairie College & Community Health Centre 780-814-5800
Grande Prairie Cancer Centre 780-538-7100
Grande Prairie Mental Health Services – Nordic Court 780-538-5160
Grande Prairie Northern Addictions Centre & Business & Industry Clinic 780-538-5210
Grande Prairie Public Health Centre 780-513-7500
Virene Building 780-532-4447

GRANDE PRAIRIE YOUTH DETOXIFICATION SERVICES

780-538-6330
Queen Elizabeth II Hospital 780-538-7100

GRIMSHAW

Grimshaw/Berwyn & District Community Health Centre 780-332-6500
Grimshaw Continuing Care Centre 780-332-6500
Grimshaw Public Health 780-332-6505

GROUARD

Grouard, Public Health Centre 780-523-6450

HIGH LEVEL

High Level Addictions & Mental Health Services 780-926-2265
High Level Northwest Health Centre 780-841-3200
High Level Public Health 780-841-3259

HIGH PRAIRIE

High Prairie Addiction & Mental Health Services 780-523-6490
High Prairie Health Complex 780-523-6440
High Prairie Public Health 780-523-6450
J.B. Wood Continuing Care Centre 780-523-6470

HINTON

Hinton Addictions Services 780-865-8263
Hinton Community Cancer Centre 780-865-3333 ext.1183
Hinton Community Health Services 780-865-2277
Hinton Health Care Centre 780-865-3333
Hinton Mental Health Services 780-865-8247

HYTHE

Hythe Continuing Care Centre 780-356-3818

JASPER

Jasper Addictions Services 780-852-3064
Jasper Community Health Services 780-852-4759
Jasper Mental Health Services 780-852-6616
Seton – Jasper Health Care Centre 780-852-3344

KIKINO MÉTIS SETTLEMENT

Kikino Métis Settlement 780-623-7797

KINUSO

Kinuso Public Health Centre 780-775-3501
(services delivered through High Prairie)

LA CRETE

La Crete Advanced Ambulatory Care Centre 780-928-3733
La Crete Community Health Centre 780-928-6800
La Crete Continuing Care Centre 780-928-6815
La Crete Medical Clinic 780-928-3733

LAC LA BICHE

Lac La Biche Addictions Services 780-623-5227
Lac La Biche Community Health Services 780-623-4471
Lac La Biche Mental Health Services 780-623-5230
William J. Cadzow Health Care Centre 780-623-4404

MANNING

Manning Community Health Centre 780-836-3391
Manning Public Health 780-836-7361

MAYERTHORPE

Mayerthorpe Community Health Services 780-786-2488
Mayerthorpe Health Care Centre 780-786-2261
Mayerthorpe Mental Health Services 780-786-2279

MCLENNAN

McLennan Public Health 780-324-3750
Sacred Heart Community Health Centre 780-324-3730

ONOWAY

Onoway Community Health Services 780-967-4440
Onoway Mental Health Services 780-967-9117

PADDLE PRAIRIE MÉTIS SETTLEMENT

Paddle Prairie Métis Settlement 780-981-2188
Paddle Prairie Health Centre 780-928-2190

PEACE RIVER

Peace River Addictions Services 780-624-6193
Peace River Community Cancer Centre 780-624-7593
Peace River Community Health Centre 780-624-7500
Peace River Mental Health Services 780-624-6151
Peace River Public Health Centre 780-624-7260
Sutherland Place Continuing Care Centre 780-624-7538

PEAVINE MÉTIS SETTLEMENT

Peavine Métis Settlement 780-523-2557

PEERLESS LAKE

Peerless Lake Community Health Services 780-869-3930
(services delivered through Slave Lake CHS)

RADWAY

Radway Continuing Care Centre 780-736-3740

RAINBOW LAKE

Rainbow Lake Community Health Centre 780-956-3646

REDWATER

Redwater Health Centre 780-942-3932
Redwater Public Health 780-942-3801
(services provided through Gibbons)

RED EARTH CREEK

Red Earth Community Health Services 780-649-2242
(services for delivered through Slave Lake CHS)

SADDLE LAKE

Saddle Lake Health Care Centre 780-726-3930

SLAVE LAKE

Slave Lake Community Health Services 780-849-3947
Slave Lake Family Care Clinic 780-849-4155
Slave Lake Health Care Centre 780-805-3500
Slave Lake Mental Health Services 780-805-3502

SMOKY LAKE

George McDougall Health Care Centre 780-656-3034
Smoky Lake Community Health 780-656-3595
Smoky Lake Continuing Care Centre 780-656-3818

SPIRIT RIVER

Central Peace Health Complex 780-864-3993
Spirit River Mental Health (Satellite Clinic) 780-538-5160
(services delivered through Grande Prairie)
Spirit River Public Health Centre 780-864-3063

ST. PAUL

St. Paul Addictions Services 780-645-6346
St. Paul Community Health Services 780-645-3396
St. Paul Mental Health Services 780-645-1850
St. Therese/St. Paul Health Care Centre 780-645-3331

SWAN HILLS

Swan Hills Community Health Services 780-333-7077
Swan Hills Health Care Centre 780-333-7000
Swan Hills Mental Health Services 780-333-4241

THORHILD

Thorhild Community Health Services 780-398-3879

TROUT LAKE

Trout Lake Community Health Services 780-869-3922
(services delivered through Slave Lake CHS)

VALLEYVIEW

Valleyview Community Health Services 780-524-3338
Valleyview Health Centre 780-524-3356
Valleyview Mental Health Services 780-524-3096

VILNA

Vilna Health Care Centre 780-636-3533

WABASCA/DESMARAIS

Wabasca/Desmarais Community Health Services 780-891-3931
Wabasca/Desmarais Health Care Centre 780-891-3007

WESTLOCK

Westlock Community Health Services 780-349-3316
Westlock Community Health Services – Provincial Building 780-349-6079
Westlock Continuing Care Centre 780-349-3306
Westlock Health Care Centre 780-349-3301
Westlock Mental Health Services 780-349-5246

WHITECOURT

Whitecourt Addictions Services 780-778-7123
Whitecourt Health Care Centre 780-778-2285
Whitecourt Community Health Services 780-706-3173
Whitecourt Mental Health Services 780-706-3281

WORSLEY

Worsley Health Centre 780-685-3752

ZAMA CITY

Zama City Health Centre 780-683-2220

PRIMARY CARE NETWORKS

For more information on PCNs go to <http://pcnpmo.ca>

NORTHWEST PCN 780-841-3203

PEACE REGION PCN 780-618-4300

SEXSMITH/SPIRIT RIVER PCN 250-219-0695

WEST PEACE PCN 250-219-0695

GRANDE CACHE PCN 780-827-2540

GRANDE PRAIRIE PCN 780-539-9204

MCLEOD RIVER PCN 780-779-0079

WOOD BUFFALO PCN 780-714-2913

ASPEN PCN 780-349-4370

LAKELAND PCN 780-645-1188

COLD LAKE PCN 780-639-0011

BONNYVILLE PCN 780-826-5143

KNOW YOUR OPTIONS



When you need health care, you have many options. Knowing your options will help you get the care that's best for you.

Alberta Health Services offers programs and services at over 400 facilities throughout the province, including hospitals, clinics, continuing care facilities, mental health facilities and community health centres. Our skilled and dedicated health professionals promote wellness and provide health care every day to over four million Albertans.

Find out what Alberta Health Services offers in your local area and how you support your health.

www.ahs.ca/options

HEALTH CARE OPTIONS AND INFORMATION

811 Health Link Health Advice 24/7
Call Health Link at 811 for health advice and information across Alberta. Access is 24-hours, 7 days a week and provides support by experienced registered nurses and other healthcare professionals.

FAMILY DOCTOR
Your best option for on-going health needs. Family Doctors can diagnose and treat most medical issues, and can help manage chronic illness and mental health issues.

URGENT CARE CENTRES
Extended hour access for unexpected, non-life-threatening health concerns, such as broken bones, pain, infections and cuts.

FAMILY CARE CLINICS
Extended hours care, especially for those who need a family physician, have chronic diseases, or addiction or mental health needs.

WALK-IN CLINICS
Some communities have walk-in clinics that often don't require an appointment. Many offer extended hours.

PHARMACISTS
Renew prescriptions, assess minor condition symptoms, offer treatment or refer you to the most appropriate treatment location.

MyHealth.Alberta.ca
This website has trustworthy health information and useful health tools, including a symptom checker.

AHS apps for iPhone and Android
Use your phone to find hospitals, facilities, programs & services in your area. Emergency wait times are available for the Calgary and Edmonton areas.

HEALTH CARE mapping out in your community



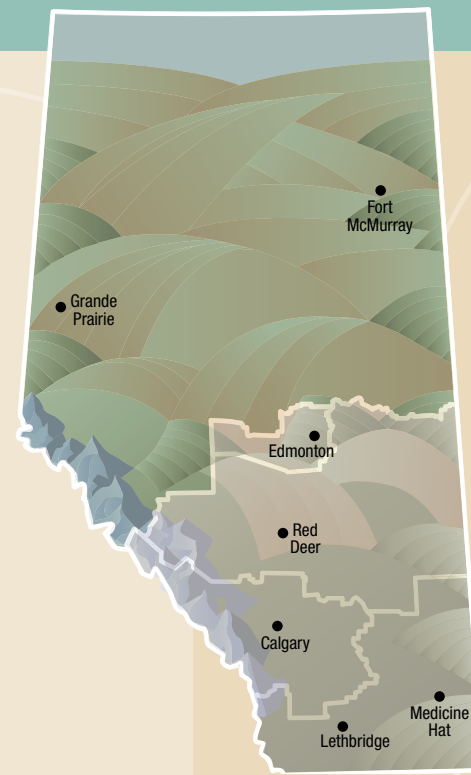
IMPORTANT CONTACTS

HEALTH LINK 811
AHS ONLINE
www.ahs.ca is your online source for health care information, services, news and more.

ALBERTA HEALTH SERVICES NORTH ZONE

LEGEND OF SERVICES

- Emergency Departments/Advanced Ambulatory Care Centres.** If you are concerned that you are seriously ill or injured, go to the nearest emergency department or Advanced Ambulatory Care Centre. **Patients with potentially life-threatening conditions should immediately phone 911.**
- Hospitals or Health Centre.** These are AHS and AHS partner facilities for treating urgent, complex or other health needs on an inpatient basis. Some sites may provide hospital care, continuing care or community health care from one site, called a Health Centre. (Partner facilities are denoted in brown.)
- Community and Public Health Services.** These facilities provide a wide range of health services which may include prenatal, postpartum, health promotion/disease and injury prevention, bereavement services, communicable disease and school health, and many other community care, public health and wellness programs.
- Primary Care Networks/Family Care Clinics.** Many family physicians in Alberta are part of a Primary Care Network (PCN) – a group of family doctors working together with a team of other health professionals such as nurses, dietitians and pharmacists to provide care to a defined group of patients.
Family Care Clinics bring together an inter-professional team in one location to provide primary care, chronic disease management, and multidisciplinary support over extended hours of service 7 days a week.
- Addiction and Mental Health Services.** These facilities and programs are for the treatment and care of people with mental health or addiction challenges.
- Cancer Care Centres.** AHS offers a variety of programs, services and facilities that work with those affected by cancer, as well as provide programs to help Albertans reduce their risk of developing cancer. For more information on the services available in the North Zone, call the Fort McMurray Community Cancer Centre, the Grande Prairie Cancer Centre, the Hinton Community Cancer Centre or the Peace River Community Cancer Centre. (Contact information for these centres is located on the reverse side.)
- Continuing Care.** These are AHS or AHS partner sites offering long term and/or supportive living options in this community.



SCALE PROVIDES APPROXIMATE DISTANCE IN KILOMETRES.



We have a passion for your health. It's why we do what we do. We know that you are passionate about good health, too. Your opinions, concerns and questions matter.

So, we've launched a project called Passion for Health where we can have face-to-face conversations with Albertans; share information on the health topics that interest you; and help you find the resources you need to be healthy.

Through our Passion for Health project, we are attending your community events, inviting you in to our facilities through open houses to see what happens behind the scenes, hosting information sessions called "Apple Talks" and we are providing health information through a blog.

We also have a series of "Because You Cared" videos that have given Albertans a way to say thank you to the health providers who have made a significant difference in their lives.

Look for AHS staff and physicians in our Passion for Health booths at festivals and community events, and at Apple Talk forums, near you.

Share your passion for health with us and visit our Passion for Health website at www.ahs.ca/passionforhealth to find out more.

CONTINUING CARE

Continuing care in Alberta includes home care, supportive living, long-term care, hospice and end of life care. Alberta Health Services has programs, services and supports to help Albertans of all ages lead active and fulfilling lives, close to home.

HOME CARE provides health care services and supports to help people remain in their own homes for as long as possible.

SUPPORTIVE LIVING facilities provide care to help people live with as much independence as their abilities allow. AHS works with the sites to ensure the client's health care needs are met.

LONG-TERM CARE provides services for people with complex health care needs who can no longer be safely cared for at home or in a supportive living facility.

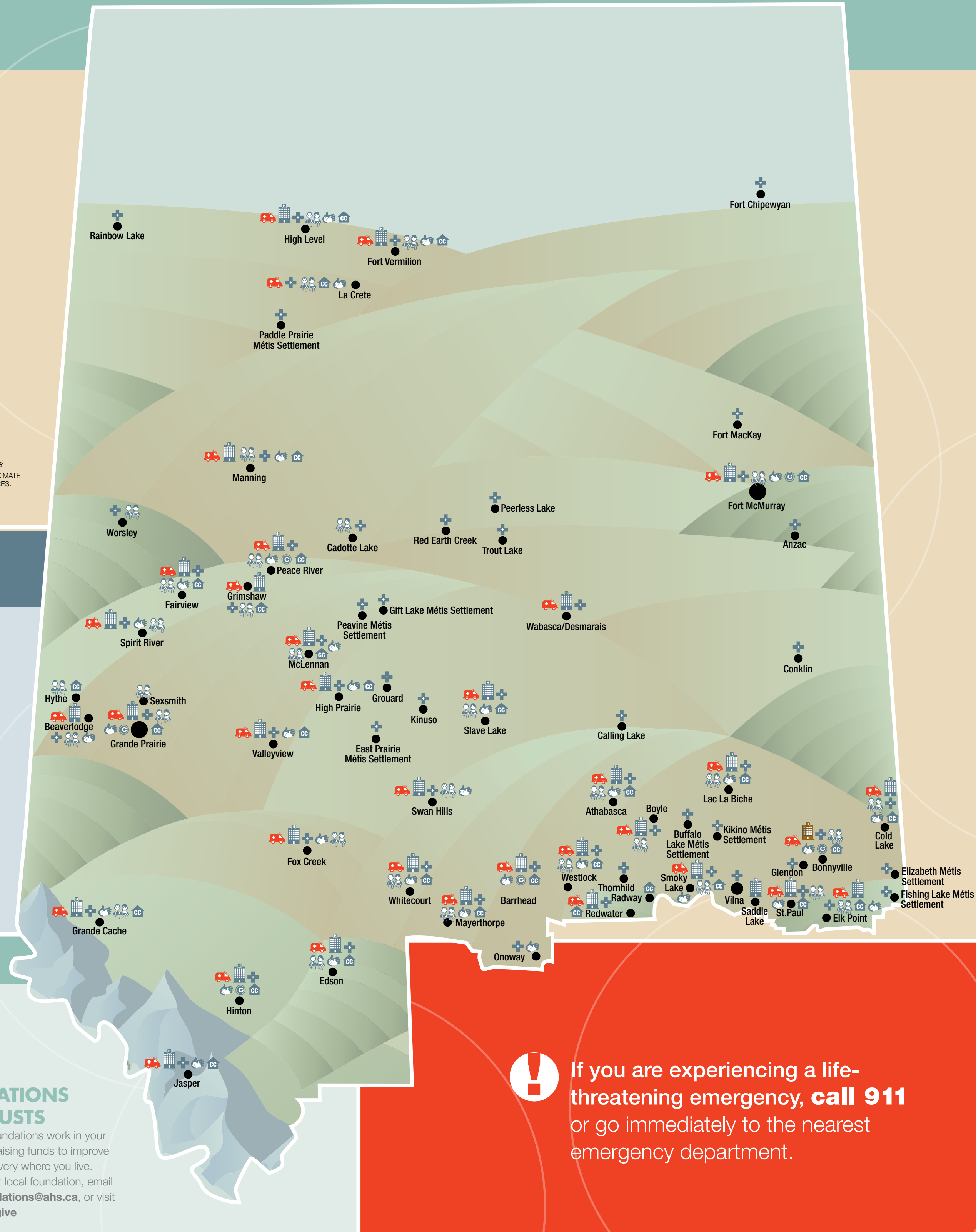
NEED HELP? HAVE CONCERNS?
Call Health Link at 811 or visit www.ahs.ca/continuingcare

HEALTH ADVISORY COUNCILS

Health Advisory Councils (HACs) are focused on one thing: listening to your thoughts and ideas on health care in Alberta. True North HAC, Wood Buffalo HAC, Peace HAC, Lesser Slave Lake HAC, Lakeland Communities HAC and Tamarack HAC are located in northern Alberta. Councils act as a channel for information and feedback, and provide advice to Alberta Health Services. For more information about the councils, please visit www.ahs.ca/hac.asp

FOUNDATIONS AND TRUSTS

Local health foundations work in your communities, raising funds to improve health care delivery where you live. To support your local foundation, email FoundationRelations@ahs.ca, or visit www.ahs.ca/give



If you are experiencing a life-threatening emergency, call 911 or go immediately to the nearest emergency department.

PATIENTS AND THEIR FAMILIES ARE THE CENTRE OF EVERYTHING WE DO AND EVERY DECISION WE MAKE.