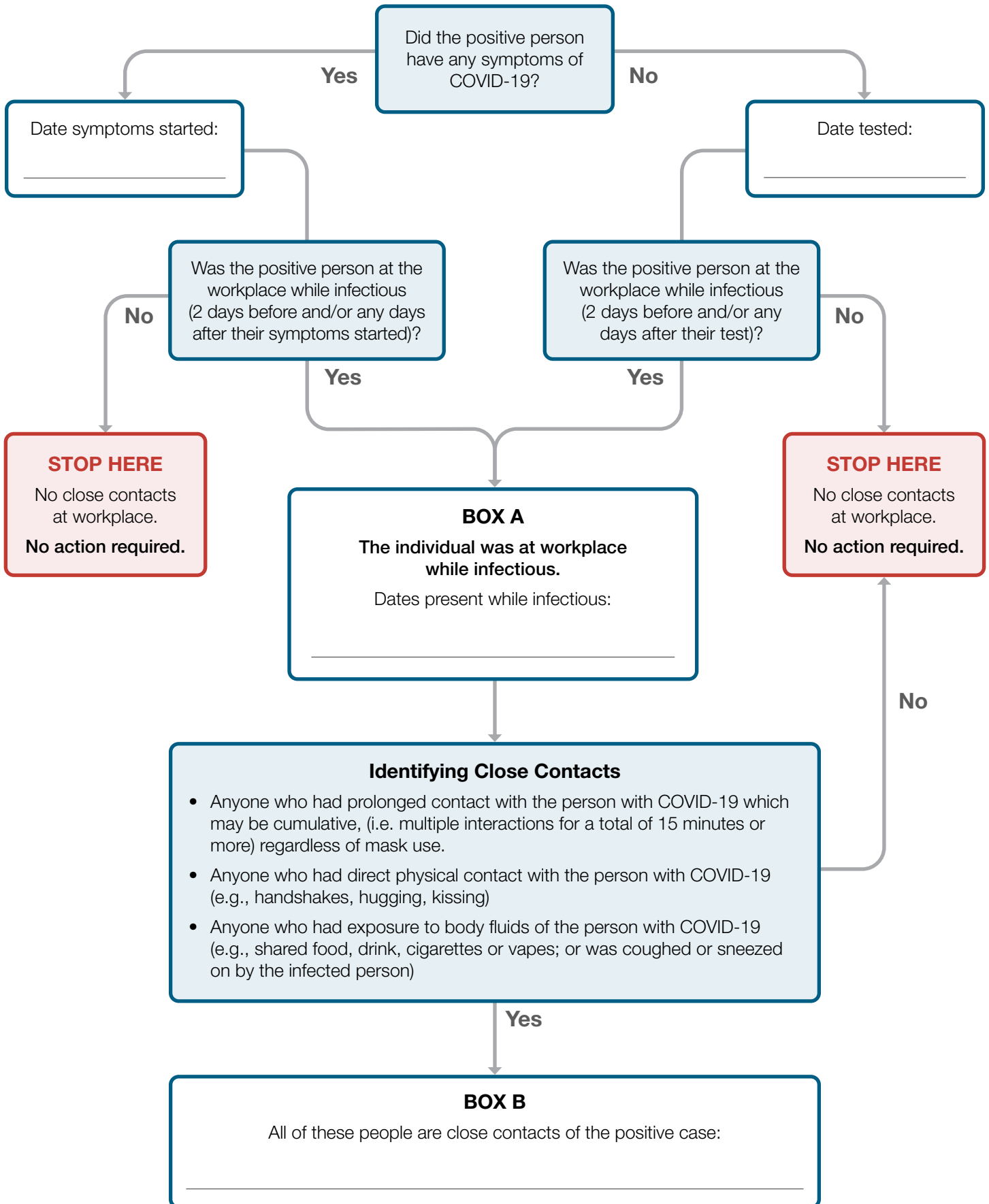


Decision Tool for Employers to Identify Close Contacts at Workplaces After Someone Tests Positive For COVID-19

Who needs to quarantine?

If AHS has provided the dates worked while infectious start at BOX A.



People identified in BOX B above a **MUST STAY HOME** and quarantine for 14 days from their last exposure to the person with COVID-19 (as identified in BOX A). Immunized close contacts have different quarantine requirements; see ahs.ca/quarantineaftervaccine. Visit ahs.ca/covid for information on quarantine and how to book a COVID-19 test.