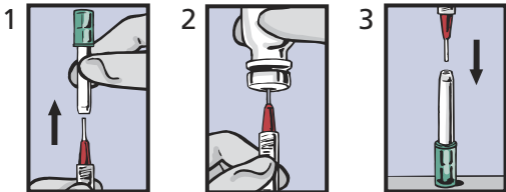
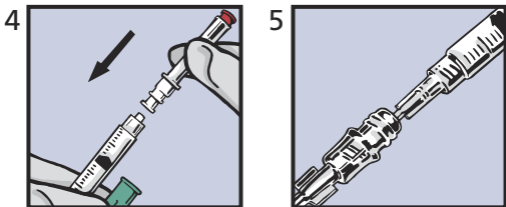


BD Twinpak™ Dual Cannula Device

QUICK REFERENCE CARD



- Use red-hub cannula to fill syringe from vial using normal protocol.
- After filling, recap the red-hub cannula into standing BD Twinpak shield or use a "scoop" method (see #3).



- Pull off the green end cap.
- Flip BD Twinpak shield over and attach the clear BD™ Blunt Plastic Cannula to the syringe (see #4).
- Access the pre-slit injection site using the BD Blunt Plastic Cannula and infuse. Dual side ports create turbulence for more efficient flushing of pre-slit injection sites.

BD Twinpak™ Dual Cannula Device

QUICK REFERENCE CARD

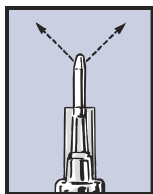


Figure A

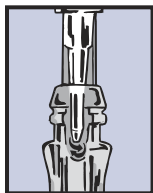


Figure B

Things to Remember:

- When expelling air or fluid from the syringe, contents exit sideways from the cannula in two separate paths (see figure A). Expel air or fluid carefully, directing flow paths away from face or mucous membranes.
- Discard BD Twinpak Dual Cannula Device in the nearest sharps collector or per institution's policy. Follow your institution's policy for safe disposal of all medical waste.
- The red-hub cannula is designed for syringe filling only. Do not penetrate IV injection sites with the red-hub cannula.