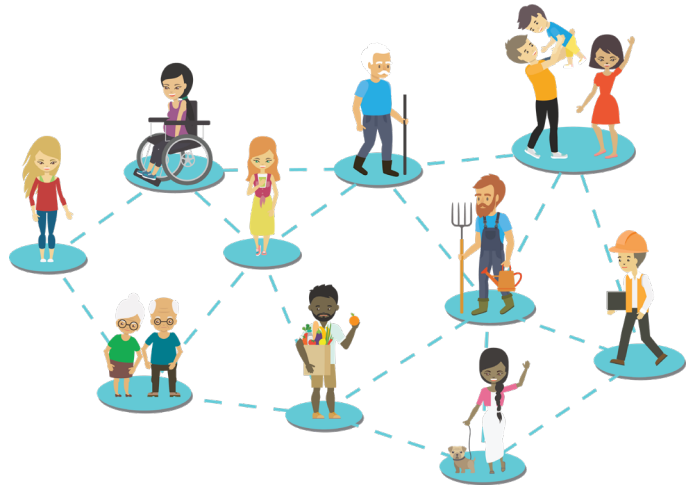


Volunteer Information Sheet

The Virtual Patient Engagement Network (VPEN) is a platform that connects patients, families and caregivers with people and teams working in primary healthcare to form engagement partnerships to help us develop a more integrated healthcare system. Patients and family advisors will be matched to primary healthcare projects and initiatives that best fit with their experiences, interests and availability. These partnerships will model a different way of working, one that sees front line staff, clinicians, leaders, patients and families, working alongside one another to co-design healthcare services.



WHY JOIN?

As a patient and family advisor volunteer, your voice and expertise will focus our work on what matters most to you:

- Share your story and what matters most to you
- Bring your voice and experience to Primary Health Care initiatives
- Connect with other advisors partnering with Primary Health Care
- Transform initiatives to be truly person-centred
- Help create a more integrated healthcare experience for Albertans
- Co-design integration solutions WITH Primary Health Care as partners.



GET INVOLVED!

There are many ways to get involved such as participating in virtual consultations, assisting with review and development of patient education materials, feedback on research grants, and more! We'll connect with you and match you up with engagement opportunities that best suit your interests, experiences and availability.

- Join our Virtual Patient Engagement Network membership list if you are curious and want to learn about exciting integration activities in Primary Health Care and watch for potential engagement opportunities.
- If you are a registered Alberta Health Services volunteer patient/family advisor we welcome your involvement in any aspect of our work.
- If you are not currently a registered patient/family advisor, we invite you to [click here](#) to learn more and get started.

Email us at PHC.IntegrationNetwork@ahs.ca

PASS IT ON!



Share this information to your friends and family who may be interested to become a patient advisor with Primary Health Care.

