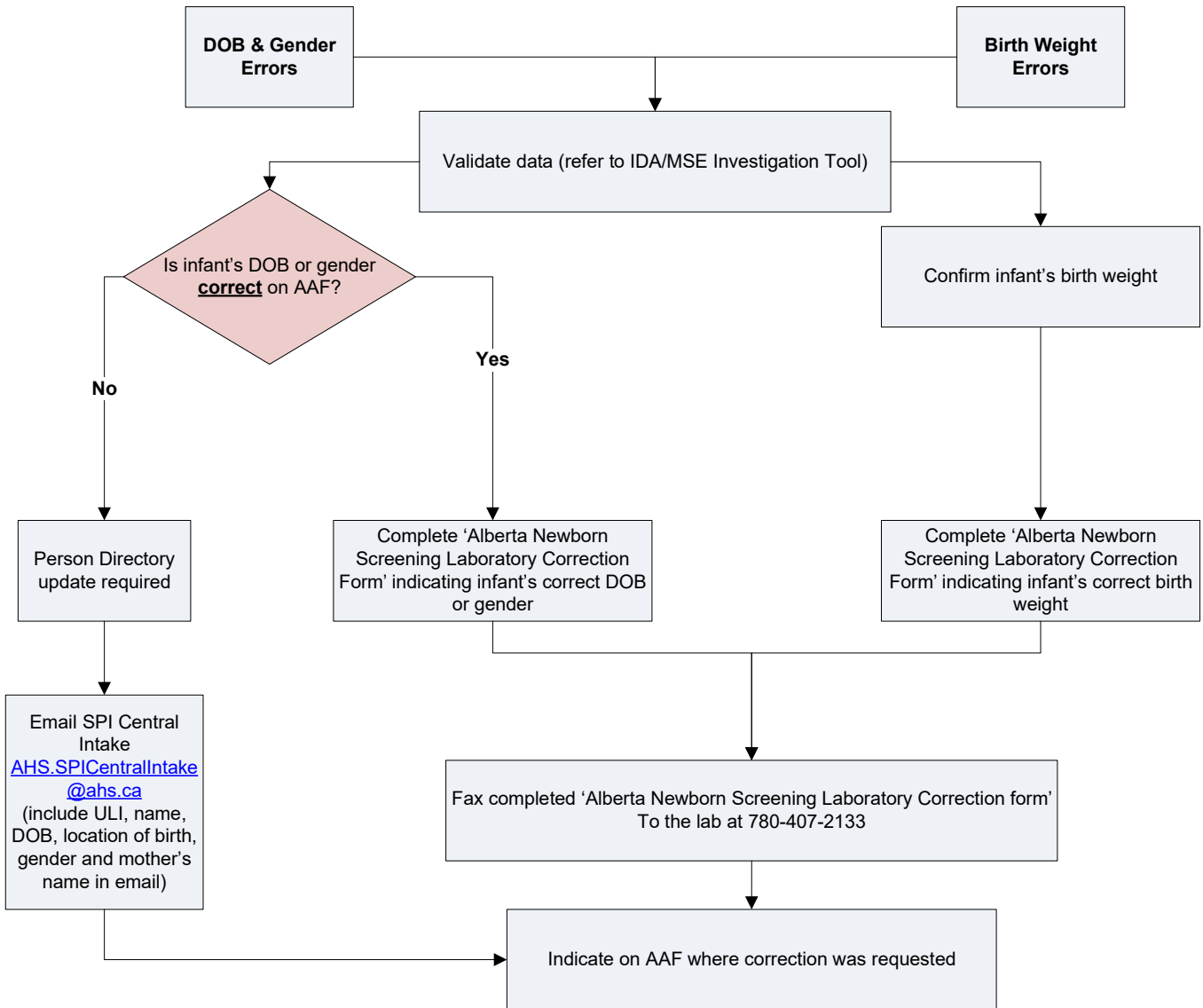


Resolving Invalid Data Alert (IDA) Algorithm

IDA's are generated when the information received by the Alberta Newborn Screening Program Application, from the newborn blood spot card, does not meet certain criteria or there is conflicting data coming from the Lab Information System and Person Directory

Alert Action Form (AAF) indicates: Alert Type IDA

IDA: Lab gender is different from demographic gender
 IDA: Requisition date of birth (DOB) is different from demographic DOB
 IDA: Birth weight category is different between samples
 Action required: Data validation



- Document your actions using the Invalid Data Alert/Missing Screen Event Investigation tool and/or a narrative in the infant's health record (depending on your zone's practices)
- Fax completed AAF to the Alberta Newborn Screening Program coordination team 403-476-8782

