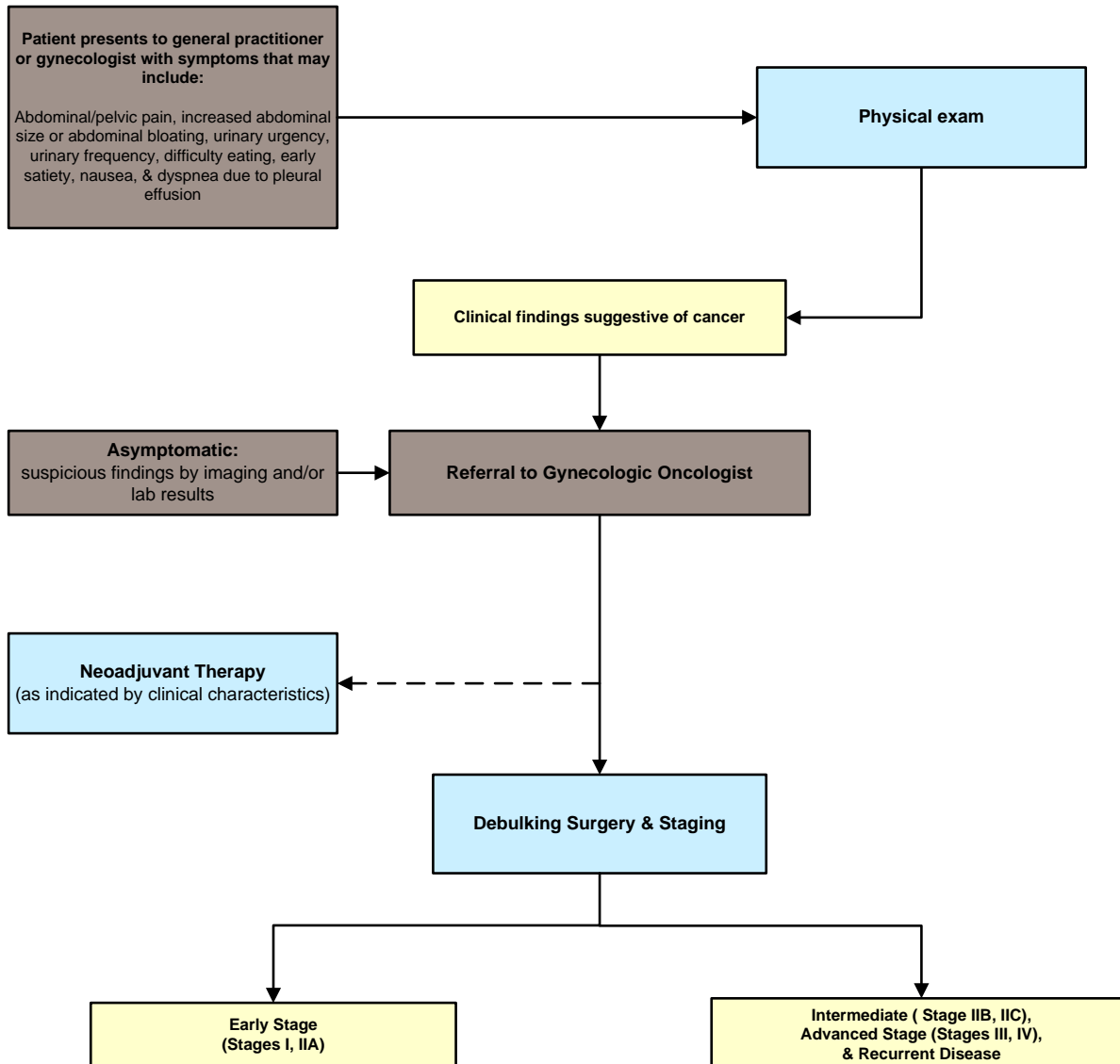


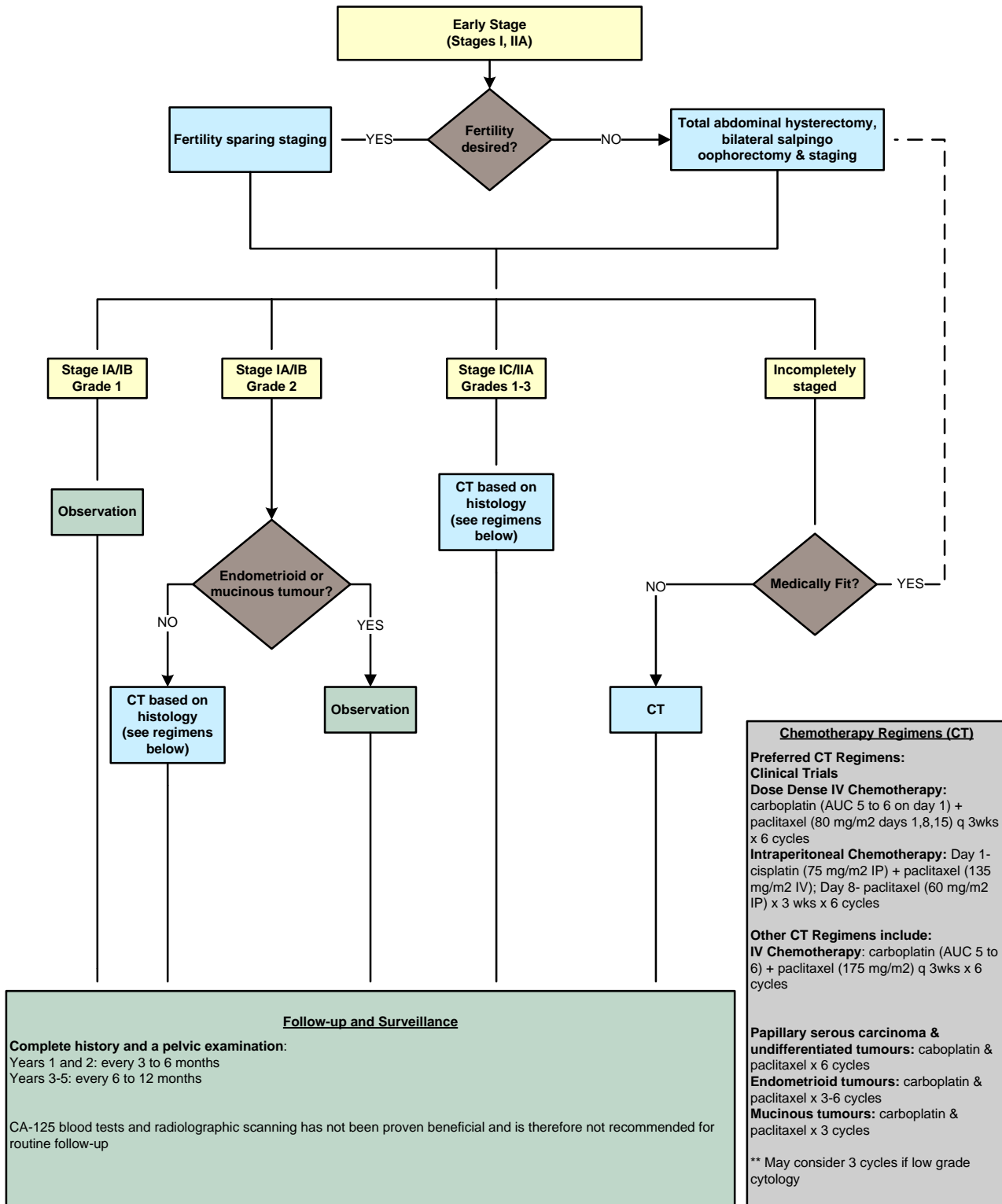
*Algorithm for the Diagnosis & Management of Epithelial Ovarian,  
Fallopian Tube and Primary Peritoneal Cancer  
(GYNE-005)*



*Algorithm for the Management of Early Stage  
Epithelial Ovarian, Fallopian Tube and Primary  
Peritoneal Cancer  
(GYNE-005)*

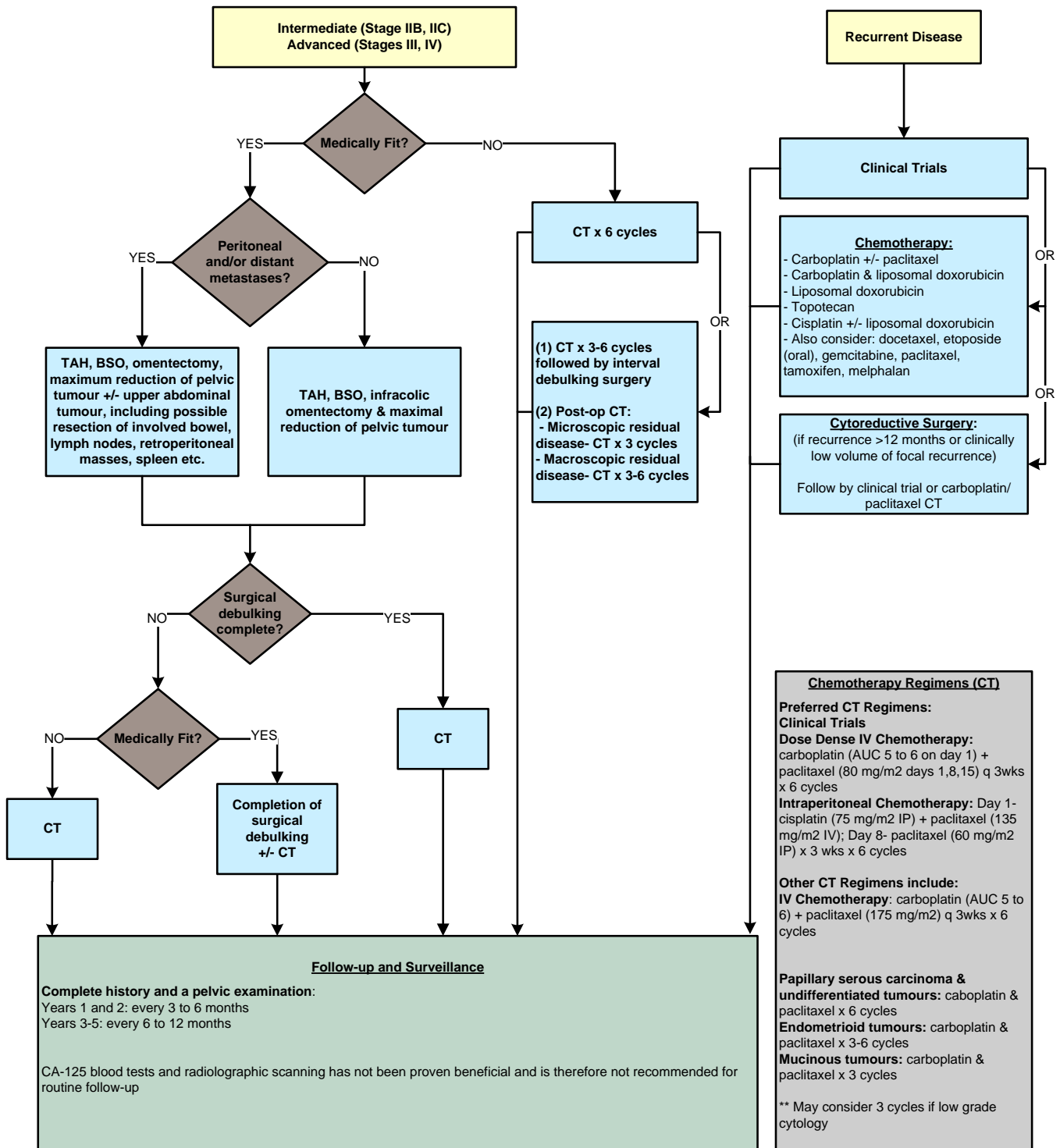
*Algorithm for the Management of Intermediate/  
Advanced Stage and Recurrent Epithelial Ovarian,  
Fallopian Tube and Primary Peritoneal Cancer  
(GYNE-005)*

*Algorithm for the Management of Early Stage Epithelial Ovarian, Fallopian Tube and Primary Peritoneal Cancer (GYNE-005)*



Version date: 2013 May 2

*Algorithm for the Management of Intermediate/Advanced Stage and  
Recurrent Epithelial Ovarian, Fallopian Tube and Primary Peritoneal Cancer  
(GYNE-005)*



Version date: 2013 May 2