

Monthly Emergency Medical Services Activity Summary

Source: Computer Assisted Dispatch (CAD) data

Publisher: System Performance and Innovation, AHS EMS

Note: This information is based on the events occurring within Edmonton regardless of the EMS service provider attending

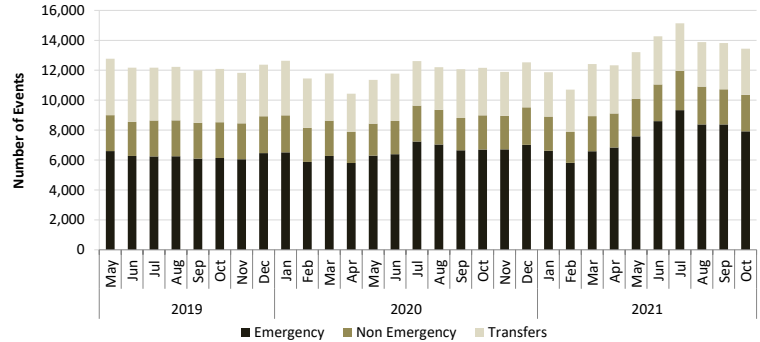
Edmonton Event Volumes

Event Volume is the count of individual events that EMS responded to. Multiple EMS ambulance vehicles may respond to a single event.

Emergency events are those assigned a determinant of Bravo, Charlie, Delta, Echo.

Non-emergency events are assigned a determinant of Alpha or Omega.

Transfers are all inter-facility or community transfers performed by emergency or dedicated transfer ambulance vehicles. Transfers done by air ambulances are excluded.



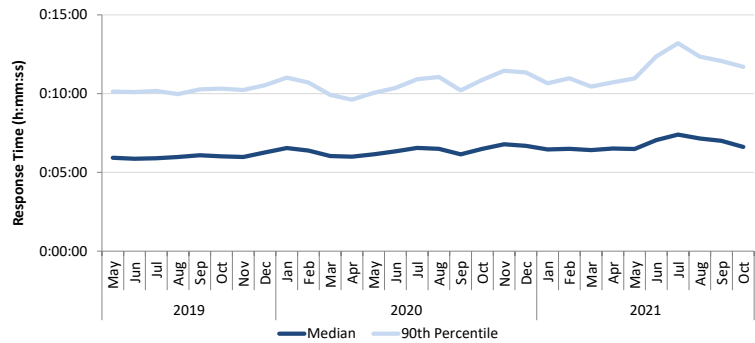
Edmonton Response Time for Life-Threatening Events

Response Time is the time elapsed from when a call is received at an EMS dispatch centre until the first EMS unit arrives on scene.

Response time is calculated for events thought to be life-threatening at the time of the 9-1-1 call. These events are a subset of the total number of Emergency events.

The median is the time at which half the response times are above and half are below.

The 90th percentile is the time at which 90% of response times are below.



Edmonton EMS Hospital Time

EMS Hospital Time is the time elapsed from when an EMS ambulance arrives at the Emergency Department until that ambulance is available to respond to another call.

The median is the time at which half the EMS hospital times are above and half are below.

The 90th percentile is the time at which 90% of EMS hospital times are below.

