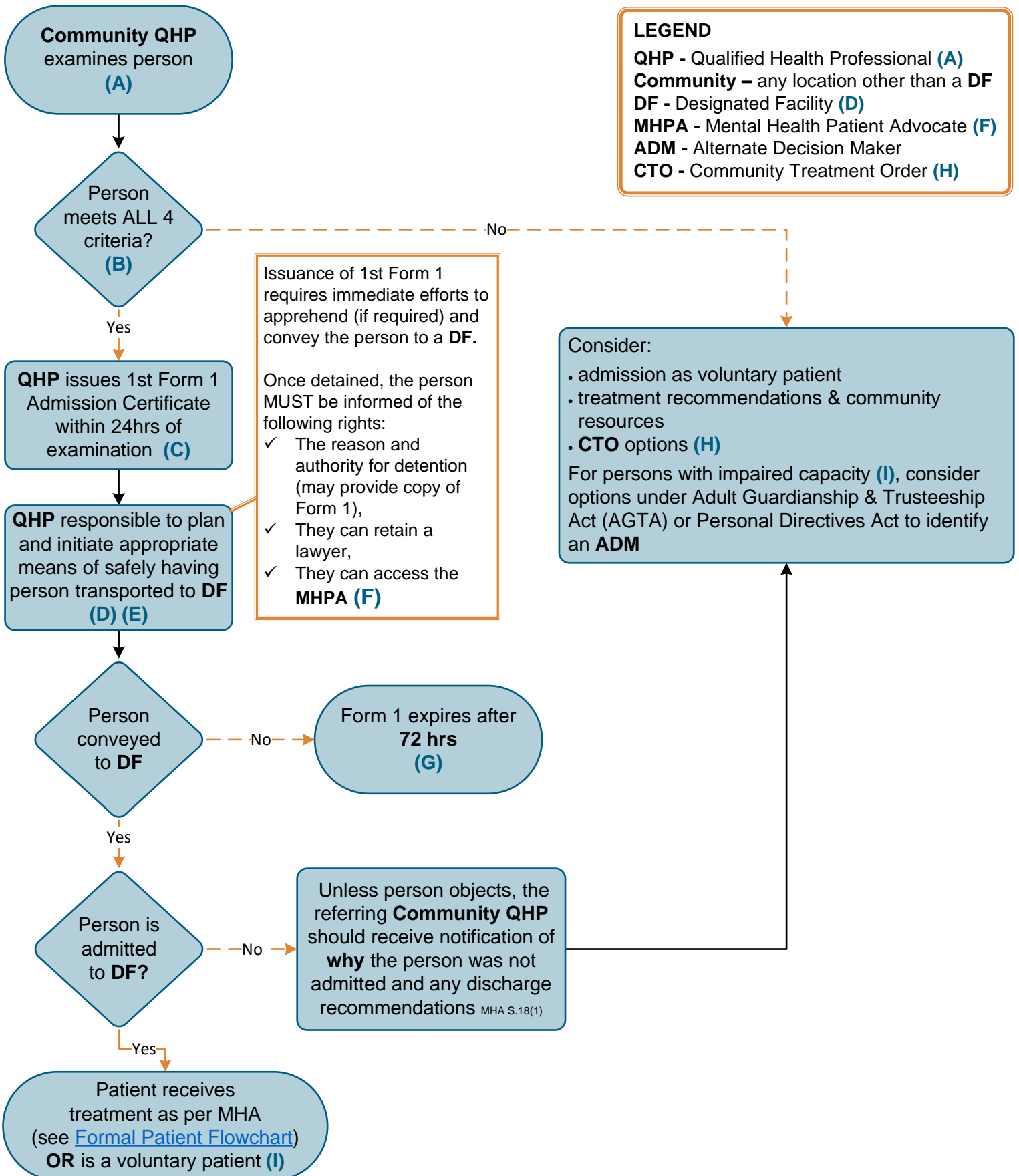


See Key Points for Reference Details A-I (over)



<p>Definition of Mental Disorder (MHA s.1(1)(g))</p> <p>A substantial disorder of thought, mood, perception, orientation, or memory that grossly impairs judgment, behavior, capacity to recognize reality or ability to meet the ordinary demands of life but does not include a disorder in which the resulting impairment is persistent and is caused solely by an acquired or congenital irreversible brain injury.</p> <p>A. QHP Examination (MHA s.2)</p> <p>A QHP under the MHA includes nurse practitioners, physicians, and psychiatrists. Meeting Form 1 admission criteria can be based on their observations and information from others.</p> <p>B. Formal Patient Admission Criteria (MHA s. 2)</p> <ul style="list-style-type: none"> • Suffering from a mental disorder, • Potential to benefit from treatment for the mental disorder, • Within a reasonable time, likely to cause harm to others or to suffer substantial mental or physical deterioration or serious physical impairment, related to the mental disorder, and • Unsuited for admission to a DF other than as a formal patient. <p>C. Form 1 Admission Certificate (MHA s.4/7)</p> <p>After a QHP examines a patient, the provider has up to 24hrs to issue a Form 1.</p> <p>One Admission Certificate:</p> <ul style="list-style-type: none"> • Gives the authority to care for, observe, assess, detain, and control the person during apprehension & conveyance to a DF. This authority expires after 72hrs of issuance. • Is valid up to 24hrs from person's arrival at a DF. 	<p>D. Designated Facilities</p> <p>DFs are the ONLY places in Alberta that can admit a formal patient under the MHA.</p> <p>Designated Facilities Map</p> <p>E. Conveyance Considerations</p> <p>The QHP may not know the whereabouts of the person. As a result, apprehension would first require locating the individual. Alternatively, the person may already be at a healthcare facility. Suitable conveyance is determined by the QHP issuing the Form 1, considering resource availability, safety, and patient care needs. While anyone can convey a person under a Form 1 to a DF, some options to consider are:</p> <ul style="list-style-type: none"> • local EMS (911/non-emergency), • contact RAAPID for QHP to physician consultation, • local law enforcement, • alternative person(s) QHP deems safe & appropriate (e.g., guardian). <p>F. MHPA</p> <p>A person under one Admission Certificate, a formal patient, a person subject to a CTO, or someone on their behalf, may contact the MHPA. Staff can also consult the MHPA for questions or advice.</p> <p>Toll free AB: 310-0000, 780-422-1812</p> <p>info@albertahealthadvocates.ca</p> <p>G. Form 1 Expiry</p> <p>If a person's whereabouts is unknown, conveyance may be delayed, or apprehension may be unsuccessful. Alternative routes for examination may be employed such as a wellness check through law enforcement or seeking a Form 8 Warrant from a Provincial Judge.</p>	<p>H. CTOs</p> <p>A CTO is a tool to help patients with serious and persistent mental health conditions to comply with treatment while in the community and break the cycle of involuntary hospitalization, decompensation, and re-hospitalization. See CTO Resources.</p> <p>I. Capacity & Decision Making</p> <p>All adults are presumed to have capacity to make their own treatment decisions. If a patient is assessed to lack capacity, explore options under the AGTA, or if the patient has a Personal Directive, consider enacting it.</p> <p>Provisions in the MHA identifying an ADM for patients who lack competency to make mental health decisions, only apply to formal patients and those under a CTO.</p> <p>Additional Resources</p> <p>Guide to Alberta's Mental Health Act Pathways for Examination at DF</p>
--	---	---

<p># Form Name:</p> <p>1 Admission Certificate</p>	<p>Completed by:</p> <p>QHP</p>	<p>Notes:</p> <p>For a person to become a formal patient at a DF, TWO QHPs perform separate exams, each issuing a Form 1. At least 1 physician & 1 staff member at DF is required.</p>
---	---	--

For information on the MHA, visit: ahs.ca/info/mha.aspx or for MHA Forms, visit: ahs.ca/info/Page1256.aspx
For enquiries about this resource, or MHA questions, contact: mhaandcto.enquiries@ahs.ca