

Recreational, Comfort, Therapeutic and Play Items

Note: If specific program protocols vary from the general recommendations provided in these recommendations, refer to, and follow department specific guidance. If you have any questions or comments, contact IPC at ipcsurvstdadmin@ahs.ca.

Best practice recommendations

Outlined in these best practice recommendations are infection control measures to keep recreational, comfort and play items clean for safe patient use in all healthcare settings. Infection risk and treatment needs vary between settings and many settings routinely use these items to enhance well-being and care, e.g., continuing care, rehabilitation, pediatrics, addictions and mental health. Items may include, but are not limited to therapy dolls, virtual training or distraction tools, tactile stimulation and play items with a cleanable or non-cleanable surface.

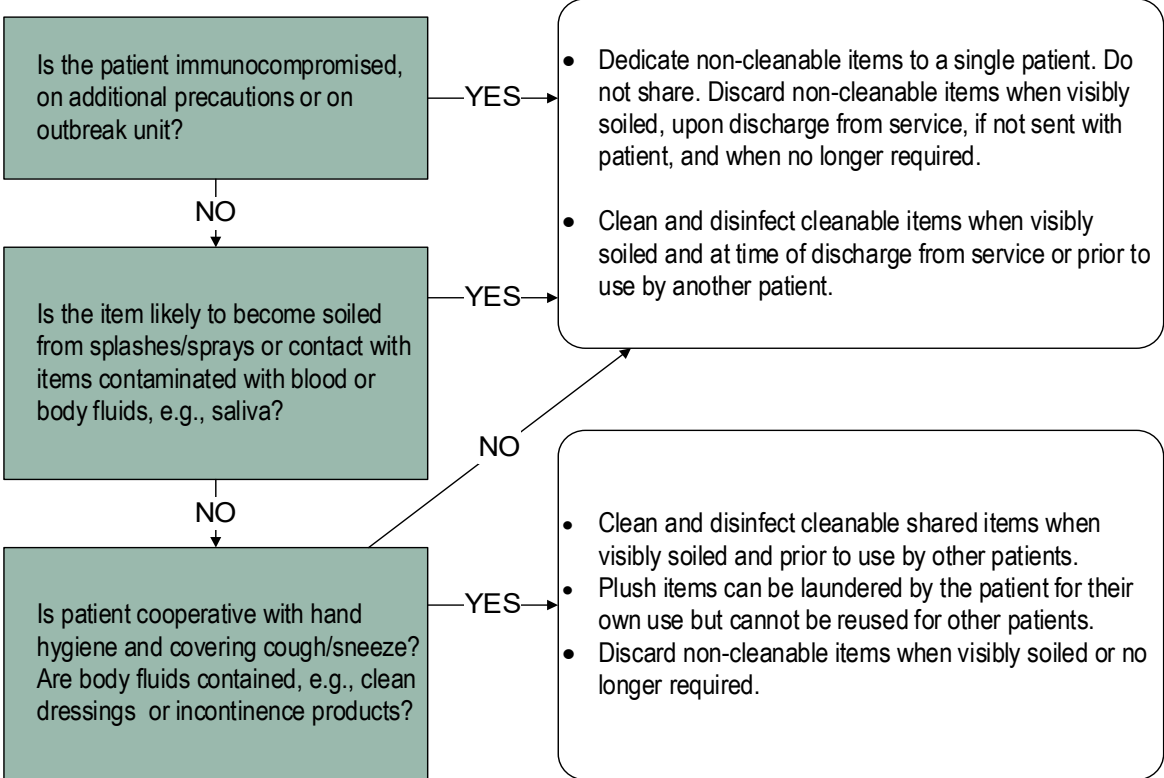
1. Follow [routine practices](#) including [hand hygiene](#), patient assessment, cleaning and handling of equipment and supplies to minimize the risk of contamination. Refer to page 2 for more detail.
2. Dedicate items to a single patient whenever possible. Items must be dedicated if patients are [immunocompromised](#), on [additional precautions](#) or in [outbreak](#) situations.
3. Items that allow effective cleaning are preferred. Refer to page 2 notes; [Selection of Furniture and Other Non-Medical Devices for Patient Care Areas IPC Guidelines](#); and [Tips for Personalizing Spaces in Continuing Care](#); for details including recommendations for interactive wall mounted items e.g., movable parts, beads etc. Where possible, choose items that are durable enough to withstand cleaning and disinfection with products used in the facility.
4. Clean and disinfect items in accordance with [IPC Principles for Environmental Cleaning and Disinfection](#) including section 2.2., Policies and Procedures: department or unit specific standards and protocols. Where appropriate follow setting-specific practice and established cleaning protocols.
 - 4.1 Automatic cleaning with a commercial or a domestic dishwasher with a sanitizing cycle may be used for some items. Refer questions about dishwasher suitability to an Environmental Health Inspector or follow manufacturer's recommended guidelines.
 - 4.2 Where appropriate, consult Linen and Environmental Services regarding cleaning protocols and products.
 - 4.3 Rinse play items, e.g., toys, with water following the cleaning and disinfection steps.
 - 4.4 Quaternary ammonium products (quats) are not recommended for cleaning and disinfecting items that a patient may place in their mouth.
5. Keep shared items used by multiple patients (such as sand tables) clean, i.e., handle with clean hands; cover when not in use, if applicable; and clean on a regularly scheduled basis.
6. Inspect and clean storage containers on a regularly scheduled basis.
7. For electronics shared and reused by multiple patients, follow the IPC [Best Practice Recommendations on Electronics and Computers](#) for cleaning and disinfection recommendations.
8. Donated items must be new and in the original package.
9. Difficult to clean donated items are gifted to a single patient and sent home with the patient or discarded when the patient is discharged from service. Play items that retain water may be a reservoir for transmission and are not recommended for use in healthcare.

For more information contact
ipcsurvstdadmin@ahs.ca
© 2024 Alberta Health Services, IPC

Version	Date (YYYY-MM-DD)
Created	2019-05-01
Updated	2020-04-01
Revised	2024-03-28

Assessing the Risk of Sharing Items

Routine practices minimize the risk of contamination.
Handle all items with clean hands.



Notes

Cleanable item means surface is durable, smooth, non-porous and wipeable, and allows effective cleaning, e.g., hard plastic game pieces and some electronics.

Non-cleanable item means surface is porous, not smooth, or non-wipeable with AHS provided cleaner/disinfectants, e.g., sand, gravel, unfinished wood or playdough.

Difficult to clean items means they have grooves, rough edges, joints or indentations, e.g., Lego™, Velcro™, action figures, wooden blocks, plastic connecting building blocks and some electronics.

Items that are cracked, chipped or peeling are discarded as they cannot be properly cleaned.



This work is licensed under a [Creative Commons Attribution-Non-commercial-Share Alike 4.0 International license](https://creativecommons.org/licenses/by-nc-sa/4.0/). The licence does not apply to AHS trademarks, logos or content for which Alberta Health Services is not the copyright owner.

Disclaimer: This material is intended for general information only and is provided on an "as is", "where is" basis. Although reasonable efforts were made to confirm the accuracy of the information, Alberta Health Services does not make any representation or warranty, express, implied or statutory, as to the accuracy, reliability, completeness, applicability or fitness for a particular purpose of such information. This material is not a substitute for the advice of a qualified health professional. Alberta Health Services expressly disclaims all liability for the use of these materials, and for any claims, actions, demands or suits arising from such use.

For more information contact
ipcsurvstdadmin@ahs.ca
 © 2024 Alberta Health Services

Version	Date (YYYY-MM-DD)
Created	2019-05-01
Updated	2020-04-01
Revised	2024-03-28

