

Occupational Therapy Student-Led Program: Logic Model Informed Evaluation Framework

Evelyn Valge, CE, MN, RN, BPhE, Jillian Quigley, MScOT, O.T. (C), Laura Benard, PT, BSc PT, MSc

DEFINE OPPORTUNITY

Due to caseload pressures and a strong commitment to student learning, the ACH developed a Student-Led Program in 2014 to meet service demands, research commitments, and pediatric student placement responsibilities. This program offered OT students a comprehensive curriculum and supervised setting in which to provide rehabilitation services to children and youth experiencing mild to moderate disabilities, and their families.

ACT TO IMPROVE

Program evaluation is an essential component of rehabilitation programs in OT practice and management. A logic model is a visual depiction illustrating what the program invests, what it does, who it reaches, and the results it aims to accomplish. It describes relationships between the program inputs (resources), outputs (activities and reach), and outcomes and is a proven, successful leadership tool.^{1,2,3} When used in a collaborative manner this tool supports strategic program planning, implementation, communication, orientation/training, monitoring, and evaluation.⁴ The development of a logic model and evaluation plan was used to guide evidence based program development, management and service delivery and provide a framework for reporting to staff and funders.

REFERENCES

1. W.K. Kellogg Foundation (updated Jan. 2004). *Logic model development guide*. W.K. Kellogg Foundation. Retrieved from <http://www.wkff.org>
2. Taylor-Powell, E., Jones, H., & Henert, E. (Feb. 2003). *Enhancing program performance with logic models*. University of Wisconsin-Extension. Retrieved from <http://www.uwex.edu/ces/lmcourse/#>
3. W.K. Kellogg Foundation (updated Jan. 2004). *Evaluation handbook*. W.K. Kellogg Foundation. Retrieved from <http://www.wkff.org>
4. Porteous, N., Sheldrick, B., & Stewart, P. (2002). Introducing program teams to logic models: Facilitating the learning process. *The Canadian Journal of Program Evaluation*, 17(3):113-141.
5. Alberta Children's Hospital. (2015). *Evidence informed decision making at Alberta Children's Hospital*. Vi Riddell Children's Pain and Rehabilitation Centre, Alberta Children's Hospital, Calgary, Alberta. Unpublished document.

MEASUREMENT

A stakeholder group, including the Student-Led Program Coordinator, Evaluation Coordinator, Unit Manager, OT Discipline Lead, and Patient Care Manager met to develop the program logic model. This collaborative effort incorporated the ACH Evidence Informed Decision Making tool whereby the client/population needs and goals, best available research evidence, and clinical expertise intersected to ensure evidence informed decision making.⁵

The logic model informed the development of an evaluation framework (i.e., evaluation questions, indicators, data collection and analysis methods, and timelines). The evaluation approach for this new program was designed to help decision-makers document the program's evolution and illustrate how modifications were connected to goals and target population needs. Outcome evaluation strategies were integrated over time to track and conduct preliminary assessments of the program's achievement of short-term outcomes.

RESULTS

A comprehensive Student-Led Program logic model and evaluation framework was successfully developed and implemented. Key activities illustrated in the logic model were:

1. **Clinical Services:** Referral Management, Group Programs, Specialized Consultation, Research
2. **Student Placement Services:** Recruitment, Placement Curriculum, Student Supervision and Mentoring Support.

The figure below illustrates an excerpt from the logic model and evaluation framework regarding the Clinical Services: Specialized Consultation Activity. The goals of this activity are:
i. To provide children/youth experiencing mild to moderate disabilities, and their families, with timely access to assessment, intervention, and connections to community services; and
ii. To provide Allied Health students opportunities for pediatric skill development in conducting assessments, targeted and time limited interventions, recommendations, and referrals to community services.

SUSTAINABILITY

A collaboratively developed versatile logic model and evaluation framework to support tailored program expansion enhances success of program implementation and sustainability.

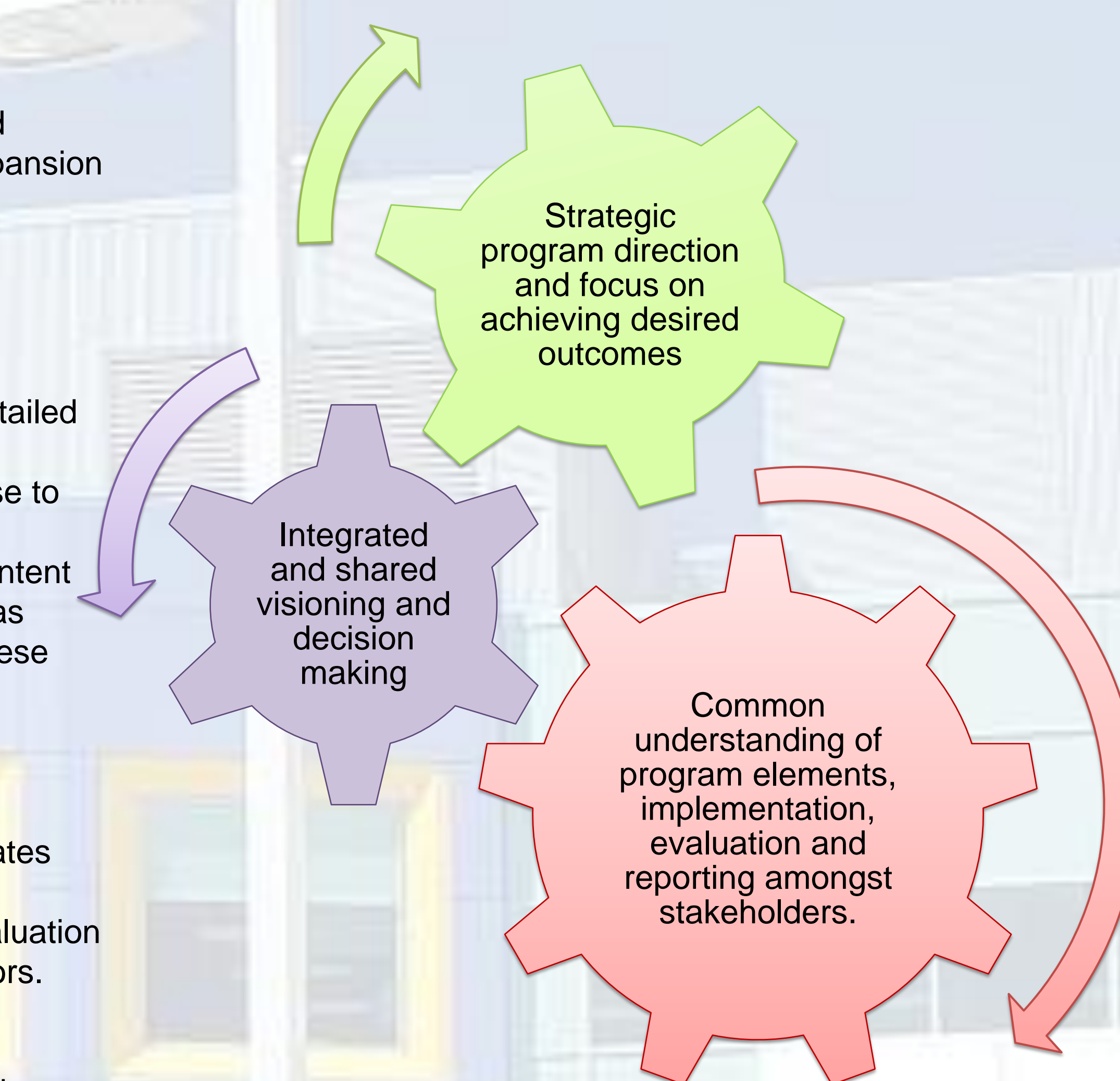
CHALLENGES

- Extensive time commitment required to design detailed logic model and evaluation framework, as well as maintain attention to revisions required in response to ongoing program evolution.
- Sharing logic model and evaluation framework content with the broader rehabilitation teams/programs was challenging due to the highly detailed nature of these documents and extensive targets.

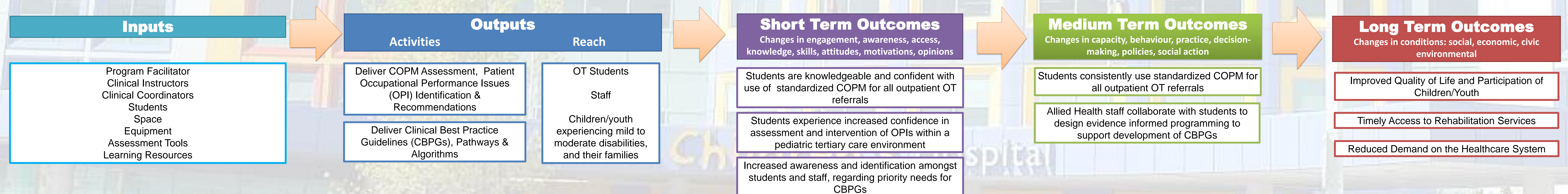
LESSONS LEARNED

The use of a program logic model by OTs demonstrates leadership in service provision by:

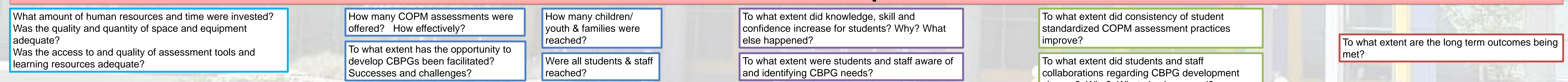
- Informing the design of a comprehensive evaluation framework and relevant performance indicators.
- Facilitating evidence informed program development.
- Increasing the likelihood that the Student-Led Program activities continue to be successfully implemented to achieve desired outcomes.



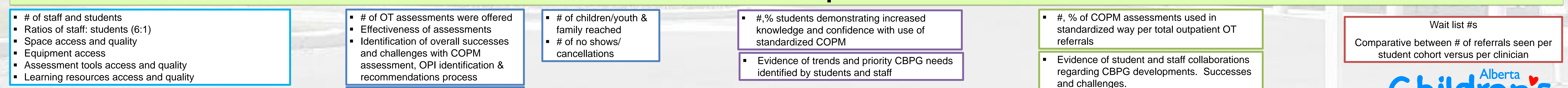
Logic Model and Evaluation Framework Excerpt: Clinical Services - Specialized Consultation Activity



Evaluation Question Samples



Indicator Samples



ACKNOWLEDGEMENTS

The authors thank the Alberta Children's Hospital Foundation and the Riddell Family for their ongoing commitment to the children, youth and families in this program.