

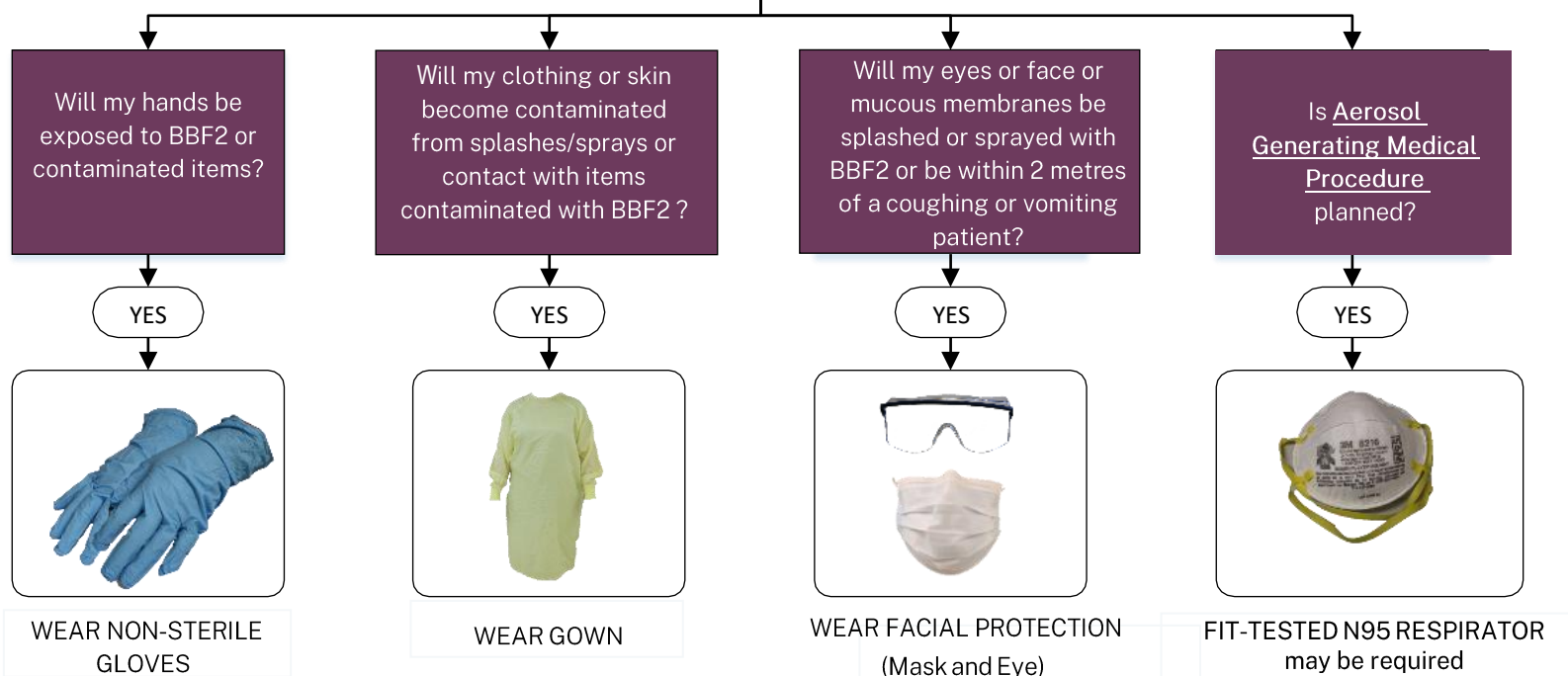
Infection Prevention and Control Risk Assessment (IPC RA) for Personal Protective Equipment (PPE) Selection

ASSESS the TASK, the PATIENT and the ENVIRONMENT¹ Prior to EACH INTERACTION

- Performing an IPC RA is the first step in routine practices.
- [Routine Practices](#) are to be used with all patients for all care and all interactions.
- This will help you decide what PPE (if any) you need to protect yourself and to prevent the spread of germs.
- If the patient has been placed on Additional Precautions, follow PPE as indicated AND assess as more or different PPE may be required based on the IPC RA.

Additional information on PPE requirements can be found at: <https://www.albertahealthservices.ca/ipc/Page6422.aspx>

An IPC RA is to be performed prior to contact with every patient, every time, even if the patient has been placed on Additional Precautions, as more PPE may be required.



NOTES

¹Environment = Any area within 2 metres of the patient, their belongings, and their bathroom

²BBF = Blood and Body Fluids (includes urine, feces, wound drainage, saliva, vomit, CSF, sputum, nasal secretions, semen, vaginal secretions)

Adapted from Choosing Personal Protective Equipment (PPE) 2014



[Creative Commons Attribution-Non-commercial-Share Alike 4.0 International license](https://creativecommons.org/licenses/by-nc-sa/4.0/)

© 2025 Alberta Health Services, IPC

For more information contact ipcsurvstdadmin@ahs.ca

Original date: March 2020
Revised date: March 17, 2025

Refer to [PPE Checklist](#)
for correct order for putting on and removing PPE and hand hygiene steps