



INTERDISCIPLINARY CHRONIC DISEASE COLLABORATION ADULT CHRONIC KIDNEY DISEASE PATHWAY



Strategic Clinical Networks (SCNs) are creating improvements within focused areas of health care.

To get the most out of our health care system, Alberta Health Services (AHS) has developed networks of people who are passionate and knowledgeable about specific areas of health, challenging them to find new and innovative ways of delivering care that will provide better quality, better outcomes and better value for every Albertan.

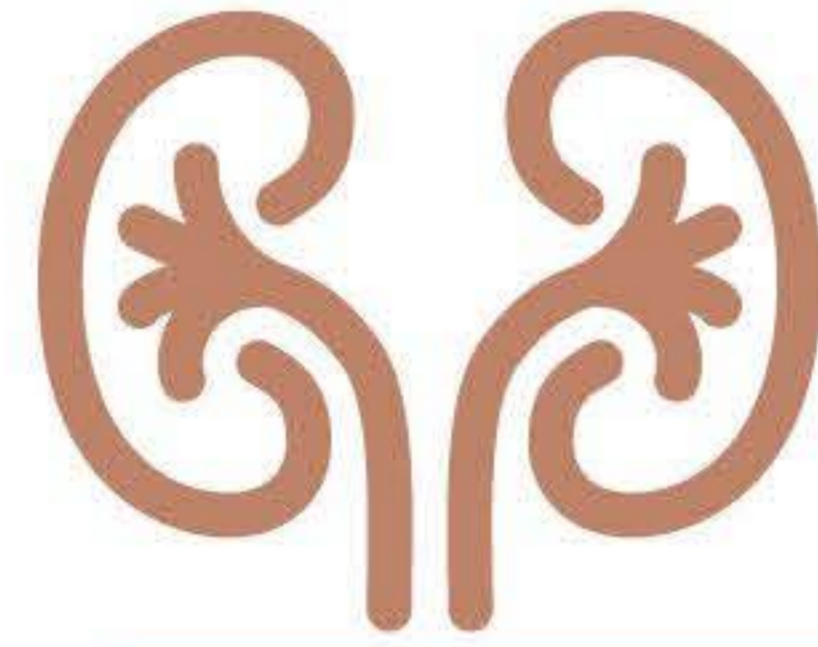
Adult Chronic Kidney Disease (CKD) Clinical Pathway is an unrestricted interactive tool that provides guidance and supporting information to physicians and allied health care professionals to assist them in identification, management and referral of patients with CKD in the primary care setting. The content is based on current evidence-based national and international clinical practice guidelines.

The CKD Clinical Pathway was developed by the Interdisciplinary Chronic Disease Collaboration in collaboration with the Northern and Southern Alberta Renal Programs, the Kidney Health Strategic Clinical Network, and key stakeholders including nephrologists, primary care physicians, allied health care professionals and IT specialists.

www.ckdpathway.ca



CHRONIC KIDNEY DISEASE



AFFECTS 12.5%
of adults
in Canada

CARE GAP IDENTIFIED

GUIDELINES / PRACTICE

UP TO 50%



of elderly patients with CKD are not on recommended cardiovascular medications

ONLY 20%



of patients who meet criteria for specialist referral are actually seen by a specialist

CARE FOR approximately **95%** of patients with CKD

PRIMARY CARE PHYSICIANS:

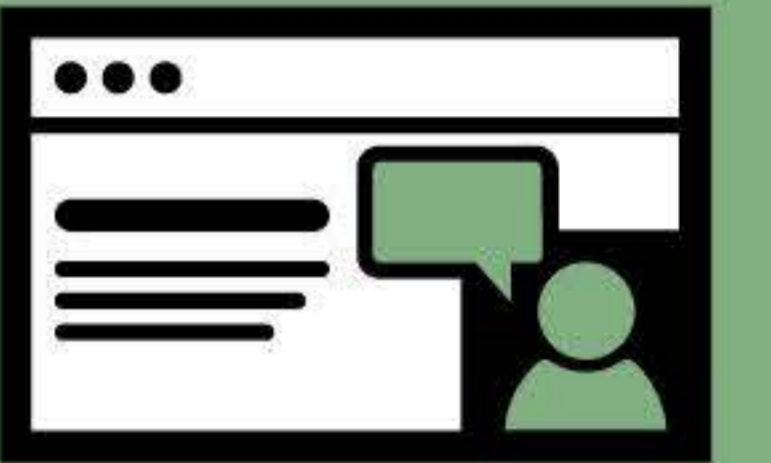
KEY ROLE IN CKD CARE

- identification
- management
- referral to specialists

An online interactive tool
CKD CLINICAL PATHWAY
www.CKDpathway.ca

94%

said the pathway was **USER-FRIENDLY** and increased their **KNOWLEDGE AND CONFIDENCE** in delivering care



Approach preferred by primary care physicians and other end users

CONSISTENT AND CREDIBLE INFORMATION for care providers

PHARMACISTS:

Study on use of CKD pathway by community pharmacists found

16%
OF PATIENTS HAD **UNDIAGNOSED CKD**

representing **40%** of all participating patients with CKD

